

Getting the Most From Your Printer With Custom Profiles

Now that you've made the decision to try new paper types to take your printing to the next level of quality, it's important to know how to use the paper profiles with your printer.

You'll find two versions of this document, this one for the Windows operating system, and another for Mac OS. The Photoshop and Lightroom settings are identical on each platform, but the printer dialogs vary widely from one operating system to another.

To get started, make sure that you have downloaded the appropriate paper profiles for your printer and paper combination from the website. You'll find links to each paper by selecting the PRODUCTS ICC PROFILE link on the Inkpress Paper homepage, or by clicking here http://inkpresspaper.com/papers_p1.asp

Installing Profiles

Select the Inkpress or Inkpress Pro buttons to go to the product descriptions and select the paper type by clicking on MORE INFO. In the example shown here, we've selected the Inkpress Glossy paper. Below the product description, you'll see a list of printers that currently have profiles available (if you don't see your printer listed here, let us know). Along with the printer name is the media setting you should use.

The screenshot displays a grid of printer and paper combinations. Each entry includes the printer model numbers, the paper type, and the media setting. The grid is organized into three columns and three rows. Below the grid is a link for instructions on how to use custom profiles. At the bottom, there are two dropdown menus for selecting a profile, one for MAC users and one for PC users.

Epson 2400/3800/4000/2200 Premium Glossy Photo	Epson 1400/2880/2400/1900 Photo Glossy paper	Epson 4800/7800/9800 Premium Glossy Photo
	Epson 1280 Photo quality inkjet paper	Epson 4880/7880/9880 Premium Glossy Photo
Epson 1800/2200/3800 Premium Glossy Photo	Canon 1950 Photo Paper pro	Canon iPF 5000 Photo paper plus semi gloss
		Canon iPF 5100/6100/9500 Heavyweight Glossy 2
Canon 19900/9500/9000 Photo paper plus glossy	Epson 260 Ultra Premium Glossy Photo paper	HP B9180/B8850 Advanced Glossy
		HP Z3100 Advanced Glossy ID

[Click here for instructions on how to use our custom profiles](#)

CUSTOM PROFILES

MAC users download here

PC users download here

Please Select

Please Select

At the bottom of the screen are two list boxes, one for Macintosh, the other for Windows, where you'll select the profile for your specific printer. Choosing the printer from the list will automatically start a download to your computer.

Next, move the file you just downloaded, which will have a name similar to **inkpressgldr1900.icc** to the following location:

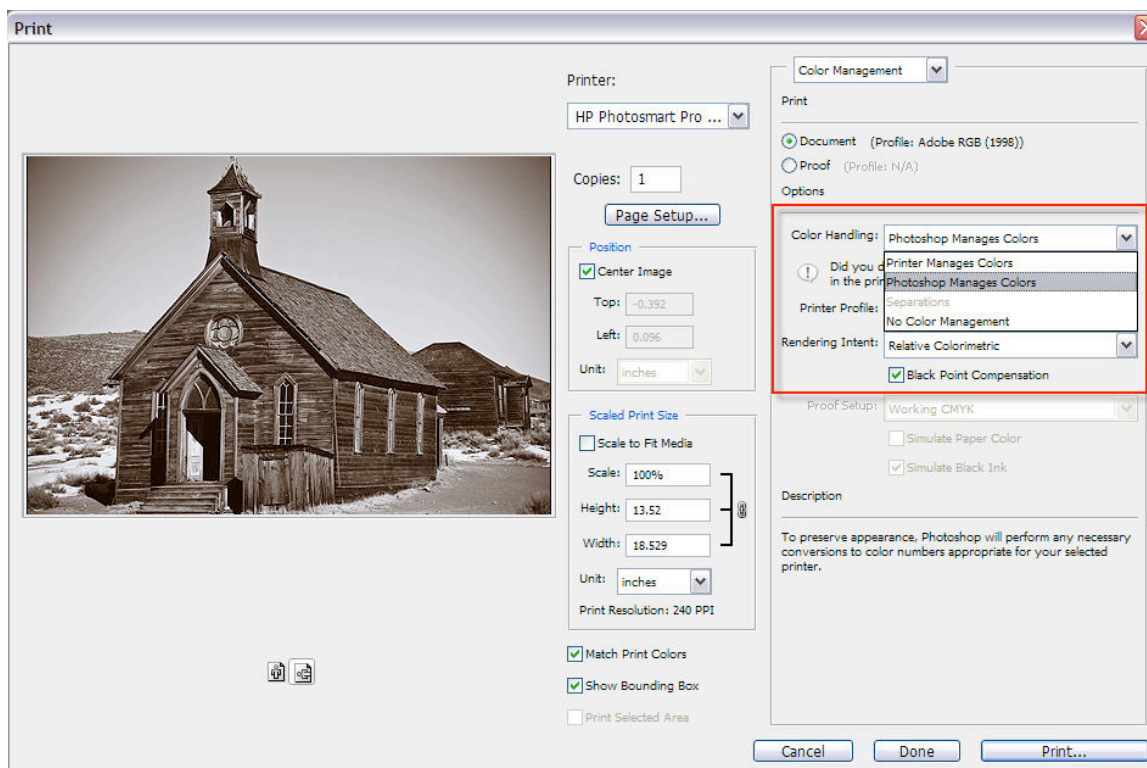
Windows\System32\spool\drivers\color

You can also right click on the profile and select Install from the pop-up menu.

This will make the profile available to all applications that support color management, including Photoshop, Lightroom, Aperture, and others.

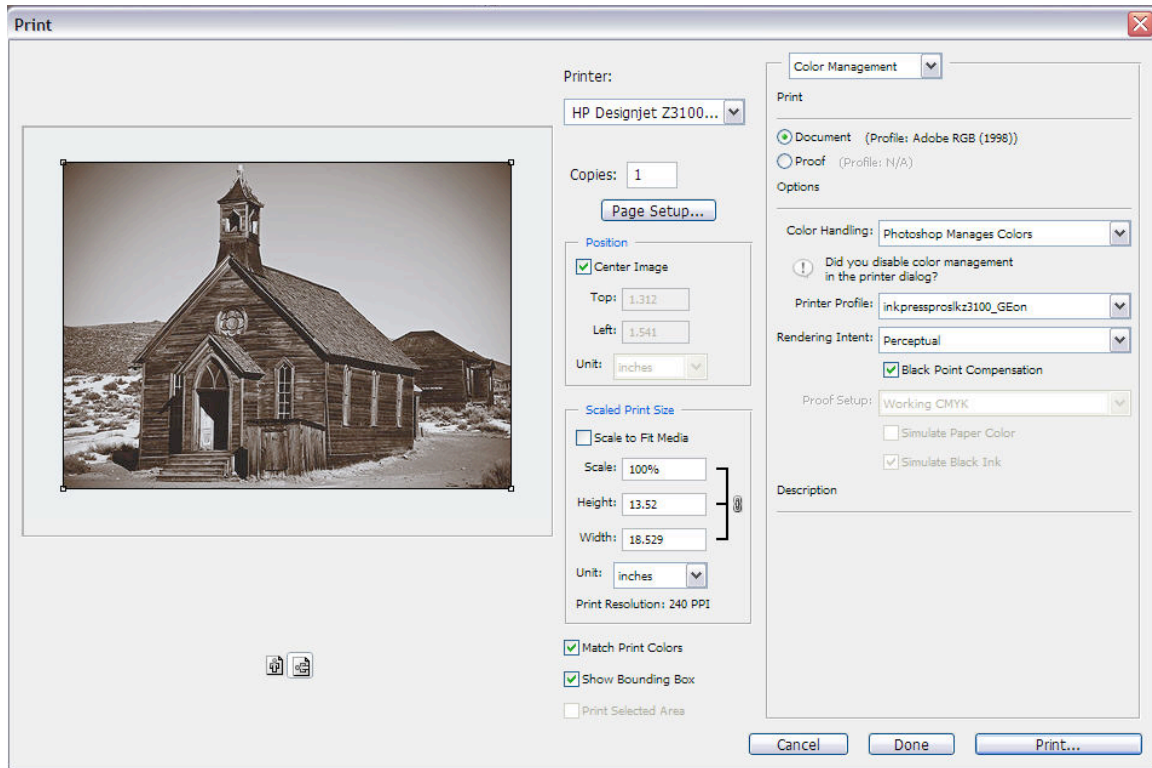
Using Your Profiles

When you're ready to print from Photoshop, select the Print command from the File menu. You'll see a similar dialog to the one shown below:



The first step is to be sure that you have Photoshop set to manage color. Do this by selecting the Color Handling pop-up menu as highlighted in the above screen shot.

The next step is to select the profile you want to use. In this example, I've selected Inkpress Pro Silky for the HP Z3100:

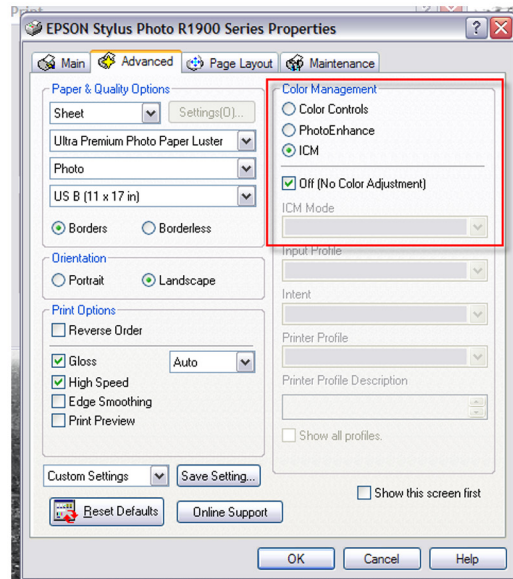
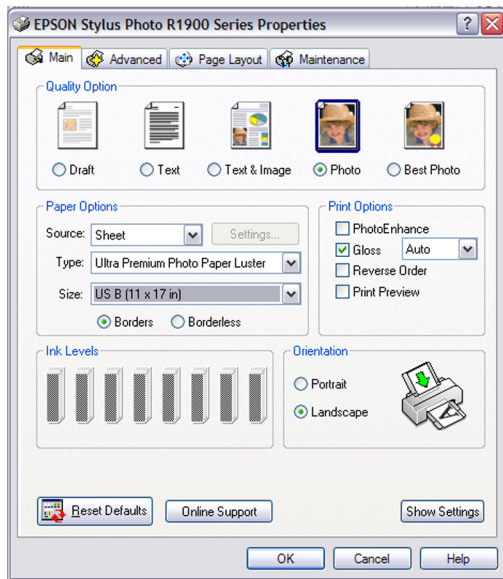


All Inkpress profiles are created with the Perceptual Rendering intent, but also work well with Relative Colorimetric.

When you click the Print button, you'll be taken to the printer dialog. Here you need to make sure that the printer is not trying to control color and that you have the appropriate paper type selected. Since each printer handles this differently, you'll see screen shots for Epson, Canon, and HP printers:

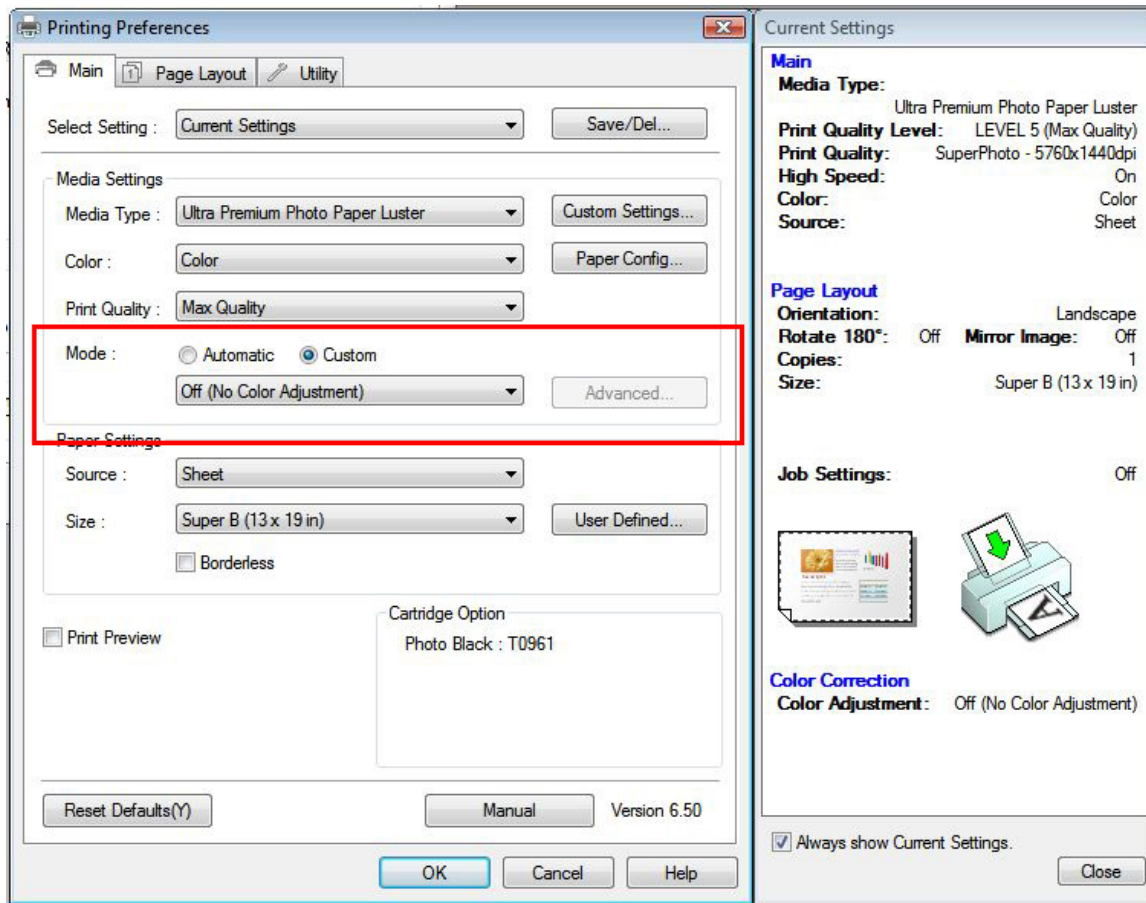
Epson Printers

Epson printers have different drivers based on the model of printer you own. For the smaller printers, you need to start on the Advanced tab and select the Paper Options. Here, I'm using Epson Luster as the media type. This is set based on the media setting listed on the Inkpress website for the paper you're using. The other critical setting here is Color Setting. You want to set this to Off (No Color Adjustment) because Photoshop is handling all color.



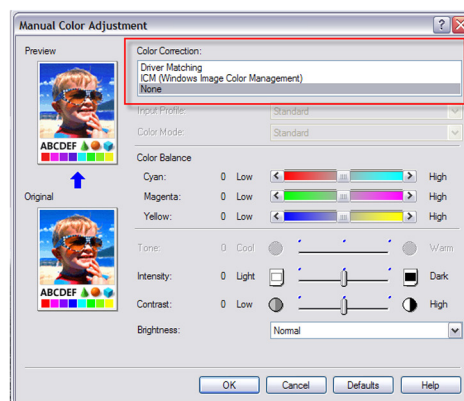
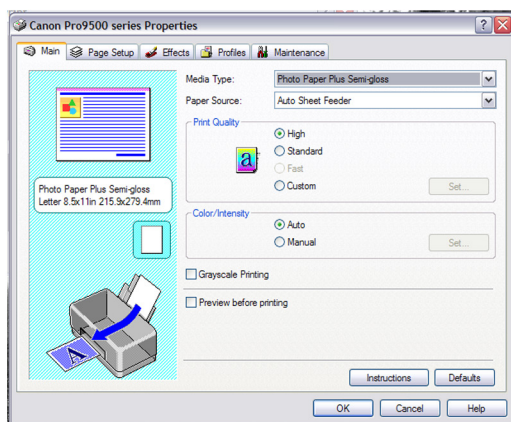
Next, in the Color Management options, select the ICM radio button. In the options below the radio button, select “Off (No Color Adjustment)”.

The other printer dialog you might see with Epson is shown below. Here, all the settings are done from the Main tab. Once again, you’ll select the appropriate paper from the Media Type list, and then under Mode, select Custom. Finally, select “Off (No Color Adjustment)” from the pop-up list.



Canon Printers

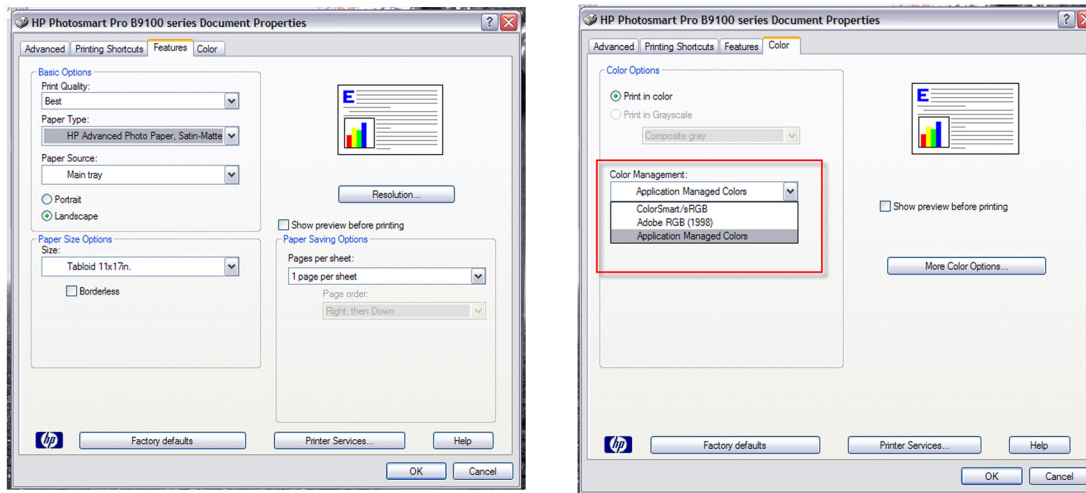
For Canon, you'll need to use two tabs in the print driver. The first option is set on the Main tab where you'll select the Media Type. This is set based on the media setting listed on the Inkpress website for the paper you're using. The next setting is on the Color Options panel.



Now, select Manual as the Color Intensity setting and click on Set. In the Manual Color Adjustment window that opens, select “None” as the Color Correction.

HP Printers

For HP printers, set the paper type by selecting the Features tab. Select the Paper Type pop-up and choose the appropriate media from the list. This is set based on the media setting listed on the Inkpress website for the paper you’re using.



Now select the Color tab, and from the Color Management pop-up select “Application Managed Colors”.

That’s it! You’re ready to print high quality images with your printer and Inkpress papers.